

Bed Bugs



01594 528359

www.pest-control-services.org

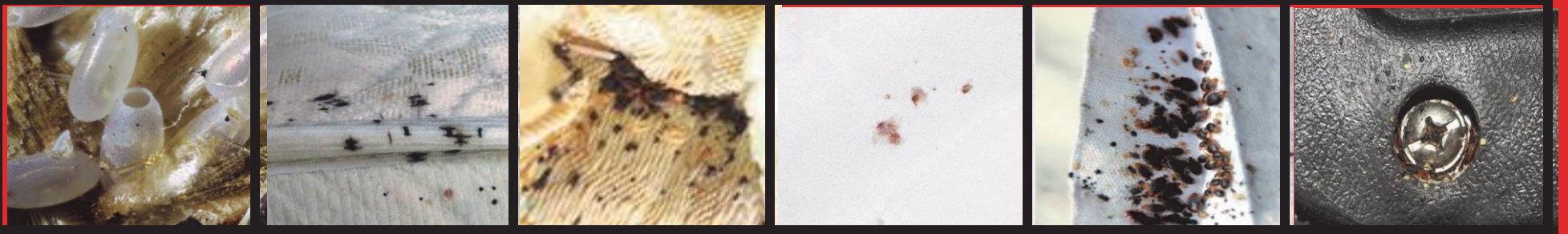
Early Detection Guide

Identify

The immature bed bug is pearl white in colour and darkens as they reach maturity.

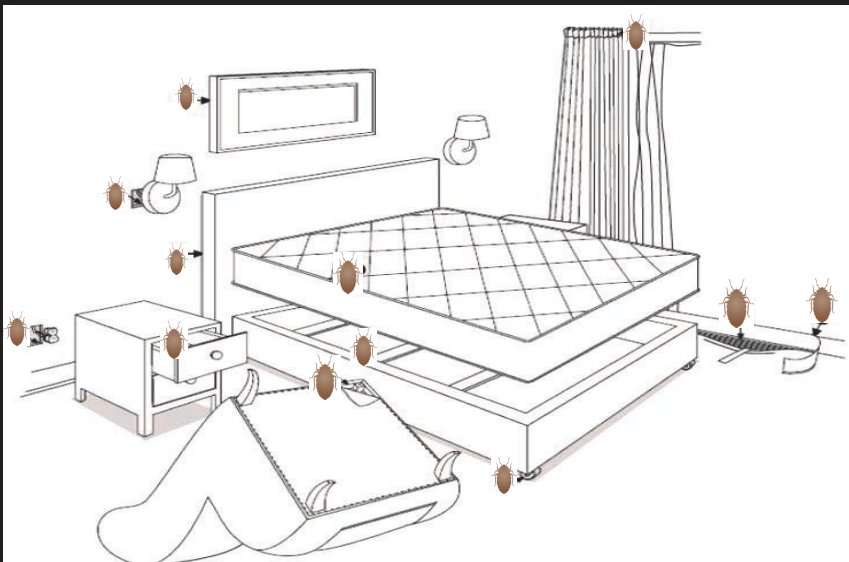
There are five of these stages before reaching the adult reproduction stage. Adult bed bugs are reddish brown in color, and are approximately ¼ inch in length.

Signs of Bed Bugs



*Eggs are laid in clusters by a sticky substance. *Fecal Stains which give the appearance of a small dark ink spot. *Castings (shed skins) *Blood Spots or Smears *Live Bed Bugs in any growth stage. * Peculiar Odour (normally in more serious infestations).

Where to Look

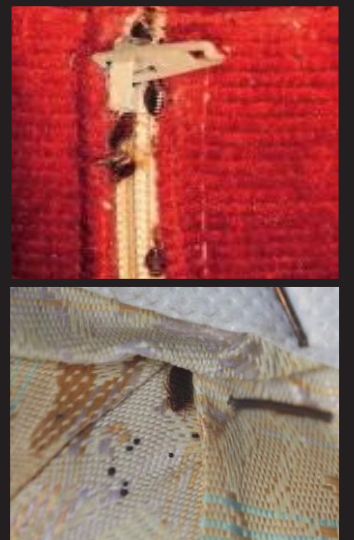


70% of bed bugs will be found in or around the headboard of the bed.

Start by inspecting the sheets, edges of the mattress piping and box springs, bed frame, bed slats and headboard.

Check in, under and behind bed side tables and cupboards, also all pleats and piping of upholstered furniture. Ceilings, crown molding, walls and wall paper, fixtures, picture frames, free standing lamps, curtains and carpet edges.

← See Diagram on the Left



Bites



The bites from a bed bug resemble many different types of bites. They can itch severely and cause sleeplessness.



**Pest Control Services Group**
Professional Bed Bug Elimination and Prevention

